

## CALIBRO A COMPARAZIONE INTERNO/ESTERNO CON PRECARICA E USCITA DATI IP54

### IP54 CALIPER FOR INSIDE/OUTSIDE MEASUREMENT WITH SPRING SYSTEM AND DATA OUTPUT

Calibro digitale interno/esterno con precarica in tiro e spinta, corpo in fibra di carbonio. Fornito con comparatore, adattatore per terminale, supporti regolabili e coppia terminali a piattello Ø 20mm.

Digital caliper for inside/out measurement with a spring system in carbon fiber. It is supplied with a dial gauge, jaw adaptor, adjustable support and a set of disk jaws Ø 20mm.

mm  
inch

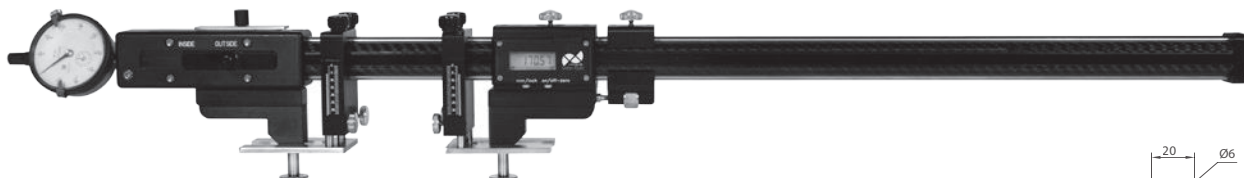
PRESET

INOX

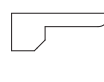
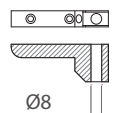
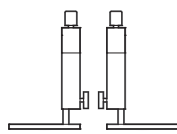
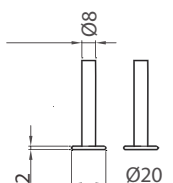
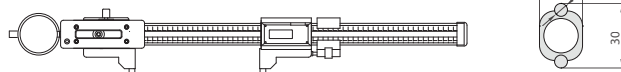
LCD

IP54

CASE



**NOTA: Corsa utile precarica 20 mm Int/Est**  
NOTE: Range spring system 20 mm ins/out

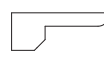
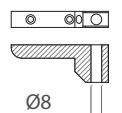
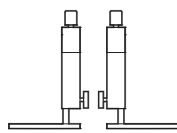
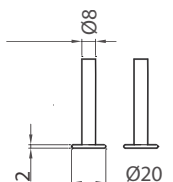
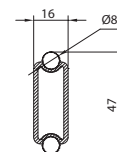
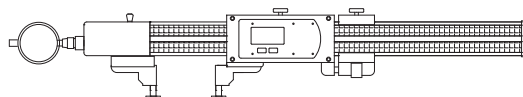


**Accessori in dotazione**  
Supplied accessories

Codice Code	Utile (mm) Range	Accuratezza (mm) Accuracy	Ripetibilità (mm) Repeatability	Lettura (mm) Reading	Kg
SAMCP081-300	300	0,02	0,002	0,01	1,200
SAMCP081-400	400				1,400
SAMCP081-600	600				1,900
SAMCP081-800	800				2,400



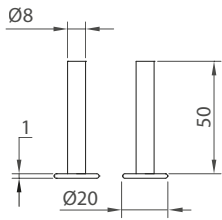
**NOTA: Corsa utile precarica 20 mm Int/Est**  
NOTE: Range spring system 20 mm ins/out



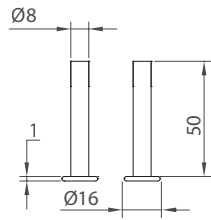
**Accessori in dotazione**  
Supplied accessories

Codice Code	Utile (mm) Range	Accuratezza (mm) Accuracy	Ripetibilità (mm) Repeatability	Lettura (mm) Reading	Kg
SAMCP081-1000	1000	0,02	0,002	0,01	2,600
SAMCP081-1500	1500				3,100
SAMCP081-2000	2000				3,600
SAMCP081-2500	2500				4,100
SAMCP081-3000	3000				4,600

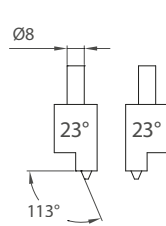
## Accessori opzionali Optionals



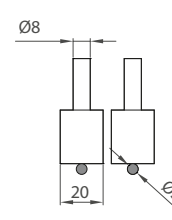
SAMCP081-R2



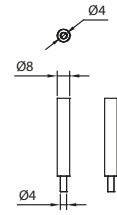
SAMCP081-R3



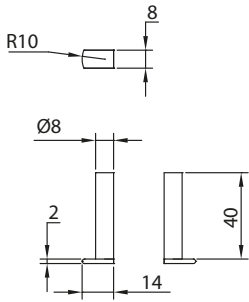
SAMCP081-RG



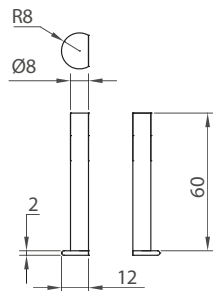
SAMCP081-F



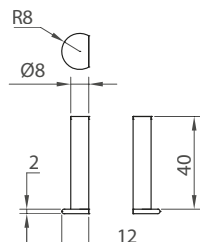
SAMCP081-SR



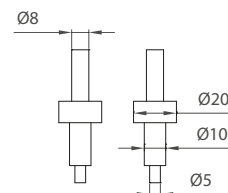
SAMCP081-RP1



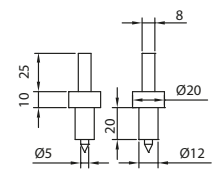
SAMCP081-RP2



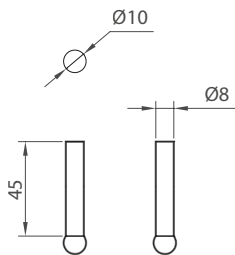
SAMCP081-RP3



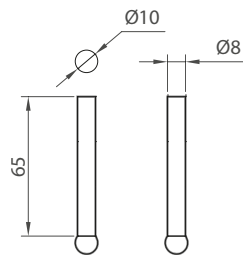
SAMCP081-IN1



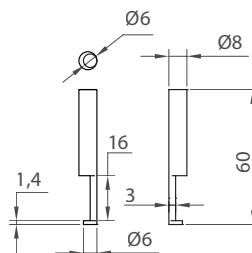
SAMCP081-IN2



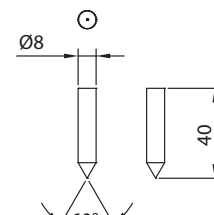
SAMCP081-SF1



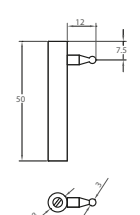
SAMCP081-SF2



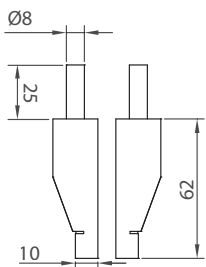
SAMCP081-RP4



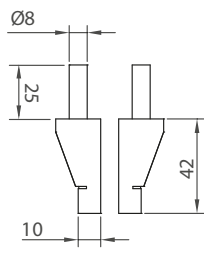
SAMCP081-P1



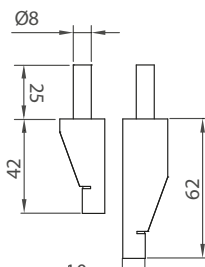
SAMCP081-L1



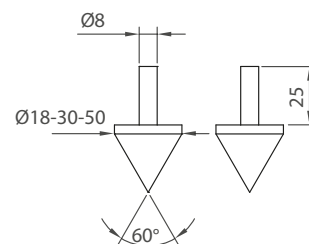
SAMCP081-M1



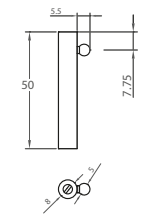
SAMCP081-M2



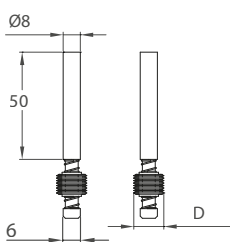
SAMCP081-M3



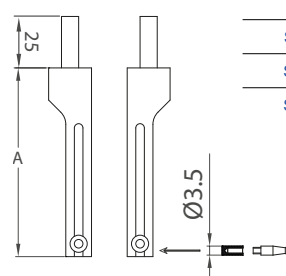
SAMCP081-C18-30-50



SAMCP081-L2



Codice Code	D (mm)	P (mm)
SAMCP081-F08	14	0,8
SAMCP081-F1		1
SAMCP081-F125		1,25
SAMCP081-F15		1,5
SAMCP081-F2		2
SAMCP081-F25		2,5
SAMCP081-F3		3
SAMCP081-F4		4
SAMCP081-F5		5
SAMCP081-F6		20



Codice Code	A (mm)
SAMCP081-L1	88
SAMCP081-L2	103
SAMCP081-L3	123